

LaserWash[®]
TOUCH FREE

GS

Touch-free!

S-SERIES[®]

LaserWash[®]
TOUCH FREE



High performance efficient wash!



Vehicle Wash Systems

A DOVER COMPANY

www.pdqinc.com

What is the LaserWash® G5 S-Series?

The LaserWash® G5 S-Series continues the tradition of quality touch-free carwash equipment for operators looking to provide a superior touch-free wash. The LaserWash® G5 S-Series is the first in-bay automatic with the patented Virtual Treadle®. With its real-time system monitoring and value-added wash options, the LaserWash® G5 S-Series gives you a 24/7 around-the-clock profit center.

Innovation & Efficiency

Over the years, the LaserWash® G5 S-Series vehicle wash system has become a proven leader in the industry because of its ability to deliver outstanding wash results and increased profit potential for operators. LaserWash® G5 S-Series achieves optimal cleaning results with its energy efficient design and low maintenance construction. With its real-time system monitoring and value-added wash options, the LaserWash® G5 S-Series gives you a 24/7 around-the-clock profit center, and at the same time offering your customers a comfortable, open-bay, touch-free wash.

Simplicity, Durability

- Belt drive, no grease points
- Aluminum construction provides years of trouble-free service
- On board soap heaters for better cleaning and water conservation



Spray Arch

- Dual HP & LP arch, fast change over
- Zero-degree rotating nozzles for better water impingement
- No arch purge
- Optimal vehicle measuring



Bridge Mounted Productivity Packages

- Applies 3x foam, protectants
- Spot-free rinse in a single pass, reducing wash time
- Productivity tilts to maximize coverage area
- Designed to maximize upsell profits!

Signage Systems

- Bright LED displays
- Easy-to-read, even with fog in the bay



Virtual Treadle

- No floor steel



MaxAir™ On-Board Dryer

- Superior drying performance
- Travels in conjunction with the wash bridge, operates immediately after completion of the wash cycle
- Delivers air columns directly to the vehicle's surface



Pump Station

- Efficient design saves on water consumption
- Single direct displacement simplicity pump provides accurate and reliable performance
- Can be used in bay or equipment room

Quality Clean, Efficient, High Volume Throughput

The LaserWash® G5 S-Series' high-pressure cleaning technology provides maximum impingement and superior cleaning, (the greater the impingement, the greater the water pressure with less water required). With over 1000 PSI of water pressure, the G5 S-Series delivers the necessary force to remove dirt and other debris from the surface of the vehicle. Fast, efficient wash cycles allow for profitable high volume throughput, while using up to 40% less water than other machines.



Wash Experience



Virtual Treadle® – eliminates drive-on floor steel to create a consumer friendly experience AND speed through-put. With no rails, confining gantry or other hindrances in the bay. All kinds of customers with all types of vehicles from low profile sports cars to dually pick-ups will feel safe using your wash.

Bright LED Signs – provide easy to understand instructions to simplify the process for your customers. You will see faster through-put and fewer drive offs.

Safe, satisfying, and easy-to-use is what will bring your customers back and generate more revenue at your wash!

Profitability

The LaserWash® G5 S-Series integrates efficient nozzle design, precise solution injection and faster spray arch travel speeds **for increased through-put!** In addition, a bridge mounted productivity package allows for application of color foam, protectants and spot-free rinse in single passes, further reducing wash times.

With it's available value-added wash options and remote real-time system monitoring, the LaserWash® G5 S-Series can become your **24/7 around-the-clock profit center!**

The LaserWash® G5 S-Series' basic wash is complete in just 2 minutes and 30 seconds!*

The LaserWash® G5 S-Series Difference...

High performance efficient touch free wash equipment



- Eliminates floor steel
- Safe open bay
- Fits on small site lots
- Bright, easy to read LED in bay signs
- Overhead design
- Super Sealant ready

LaserWash® G5 S-Series

- ✓ Yes
- ✓ Yes
- ✓ Yes
- ✓ Yes
- ✓ Yes
- ✓ Yes

Competitor

- no
- no
- no
- no
- no
- no

* Wash times vary by individual wash conditions, machine package configurations, and technical experience.



Physical Specifications

	Standard	Metric
Frame Length:	30' - 0"	915 cm
Frame Width:	13' or 15'	397 cm or 458 cm
Frame Height:	11' - 6"	351 cm
Arch Clearance (Adjustable):	86" - 90"	219 cm to 229 cm



Building Requirements

Minimum Bay Length (w/o rail heat option):	30'-2"	920 cm Minimum
Minimum Bay Width (w equipment room):	13'-0"	397 cm Minimum
Minimum Bay Width (w/o equipment room):	15'-2"	463 cm Minimum
Minimum Bay Height:	11'-8"	356 cm Minimum (Check Utilities)
Electrical Requirement U.S:		208-230V/ 3 Ph/ 60 Hz @ 145 Amps (with on-board dryer)
Recommended Water Supply:		25 gpm @ 35 psi
Air Requirements:		3 cfm @ 90 psi



Motor & Pressure Specification

Bridge-mounted, on demand, high efficiency
 15 HP / 208-230 V / 3 Ph / 60 Hz
 Single Three-Cylinder Piston Pump
 1250 psi
 1200 psi rotating up to 3000 rpm
 21.5 gpm



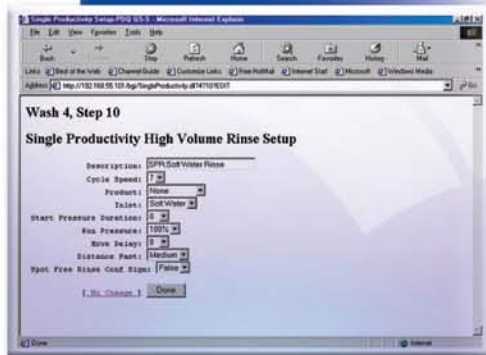
User Interface Software

PDQ's LaserWash G5 S-Series wash control software uses a web-based platform to provide dial-in access to all key operating functions. You can change wash packages, view hourly performance and monitor all machine functions remotely.

Standard Features:

- Software is viewed and programmed on standard HTML web browsers
- Provides management reports and on-line diagnostics
- View G5 S-Series sales in a daily graph detailing hour-by-hour performance
- Create custom wash packages
- Infrared remote keyboard provides manual operation function for diagnostic
- Dial-in or high-speed access

Computer Interface Screen



The specifications listed above are minimum requirements; please contact a PDQ representative to discuss your specific utility needs and bay size.



The LaserWash® G5 S-Series is fully UL certified.

The UL mark is a trusted symbol of safety giving you the confidence that all systems and components are fully certified.

MADE IN THE USA

Please visit our website for **FREE** literature and DVD's on all our equipment!

www.pdqinc.com



Vehicle Wash Systems

A DOVER COMPANY

We can help call: (920) 983-8333 • 1-800-227-3373

PDQ Manufacturing, Inc. 1698 Scheuring Rd. De Pere, WI 54115 USA | 1/08